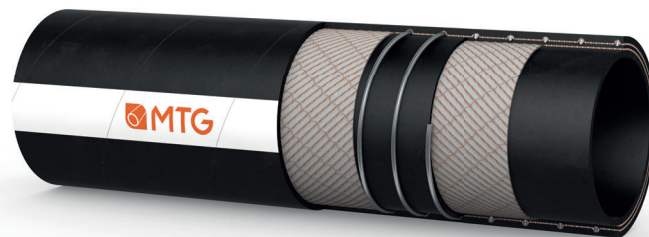


MANIFATTURA TUBI GOMMA S.p.A.

Grisignano di Zocco, 36040 (VI) ITALY
T. +39 0444.614755 | info@mtgspa.com
www.mtgspa.com



APPLICATION

- Suction and delivery hose for pneumatic and/or hydraulic transport of abrasive products.
- Normally used in construction/shipbuilding, extractive, steel and mining companies and other industries.

CONSTRUCTION

TUBE

- NR/SBR rubber, black colour, antistatic ($R < 1 \text{ M}\Omega$), resistant to abrasion, smooth.

REINFORCEMENT

- High strength plies of synthetic cord.
- Embedded steel helix wire.

COVER

- NR/SBR rubber, resistant to abrasion and weather. Black colour, smooth, cloth finish.

MIN. BENDING RADIUS

- 6 times inner diameter.

FITTING

- By means of clamps, collars, pressed-in couplings or other systems needed by the equipment manufacturers.

TEMPERATURE RANGE

- From -30°C to $+70^{\circ}\text{C}$.
- Peaks up to $+80^{\circ}\text{C}$ depending on the products conveyed.

WORKING PRESSURE

- 10 bar.

SAFETY FACTOR

- ≥ 3 times working pressure.

NOTE

- If required, it is available in service lengths with cuffs at the ends.

MARKING

 **GHIBLI** Antistatic $R < 10^6 \Omega$ **MADE IN ITALY**

TECHNICAL SPECIFICATIONS

SIZE TOLERANCES: Inner diameter: ISO 1307 - Wall Thickness: DIN 7715 T4 S2 - Length: ISO 1307

Other sizes and colours are available upon request. Please contact our Sales Department.
Above technical data refer to application at room temperature ($+20^{\circ}\text{C}$).

Cod. IT-G00023

UPDATED: 04/18
Rev: 001