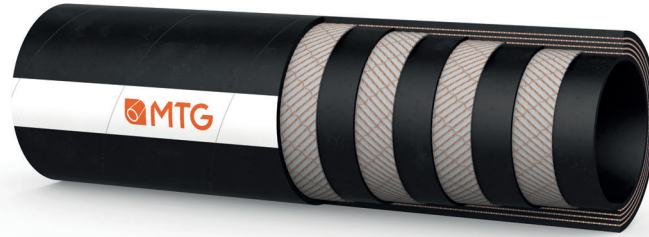


MANIFATTURA TUBI GOMMA S.p.A.
Grisignano di Zocco, 36040 (VI) ITALY
T. +39 0444.614755 | info@mtgspa.com
www.mtgspa.com



APPLICATION

- CSM rubber hose specifically engineered for application on peristaltic pumps.
- The structure provides a good mechanical performance and is highly suitable for conveying plenty of aggressive chemicals*.
(* Please contact the MTG Technical Sales Department to check the chemical compatibility with the products.

CONSTRUCTION

TUBE

- CSM rubber, black colour, smooth.

REINFORCEMENT

- Plies of synthetic cord.

COVER

- Synthetic rubber, black colour, smooth, cloth finish.
- Version available with ground cover: MTG-PERISTALTIC/CSM/Ret.

DIMENSIONS

- Normally supplied in service lengths.
- Inner diameter, wall thickness and length are defined by the peristaltic pump manufacturer.

TEMPERATURE RANGE

- From -10°C to +80°C.

WORKING PRESSURE

- 10 bar.

SAFETY FACTOR

- ≥ 4 times working pressure.

NOTE

- For any further information concerning technical features, hose solutions available and chemical compatibility with the products conveyed, please contact MTG Sales Department.

MARKING

- Without any marking or marking on demand.
- Without any marking for the version with ground cover.

SIZE TOLERANCES

- Length and wall thickness: to be agreed with MTG Sales Department.