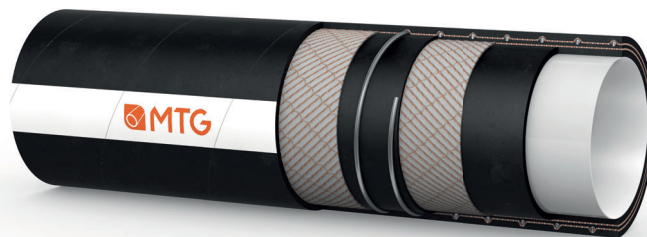




MANIFATTURA TUBI GOMMA S.p.A.

Grisignano di Zocco, 36040 (VI) ITALY
T. +39 0444.614755 | info@mtgspa.com
www.mtgspa.com



APPLICATION

- Universal suction and delivery hose for conveying alcohols, acids, alkaline products, polar and non polar solvents and other aggressive chemicals.
- The chemical inertness and the high degree of impermeability of its FEP liner make it suitable for conveying a wide range of aggressive chemicals.
- Execution in accordance with regulation EN 12115:2011.

CONSTRUCTION

TUBE

- FEP (Fluorinated Ethylene Propylene) liner, light colour, smooth.
- Compliance: 3A Sanitary standards n.20-27, FDA Standards, USP Class VI and Regulation EU n. 10/2011.

REINFORCEMENT

- Synthetic textile plies.
- Embedded steel helix wire.

COVER

- Synthetic rubber, black colour, antistatic ($R < 10^6 \Omega$), smooth, resistant to abrasion and weather, cloth finish.

MAIN BENEFITS

- Hose in accordance with EC 1935/2004 and 2023/2006/EC (GMP).
- The MTG production cycle is free from animal derived ingredients, phthalates, adipates and materials subject to restrictions acc. to EC 1907/2006 (REACH).

TEMPERATURE RANGE

- In accordance with EN 12115:2011.
- Peaks up to +130°C for sterilizations for max. 30 minutes..

SAFETY FACTOR

- ≥ 4 times working pressure up to ID 75 mm.
- ≥ 3 times working pressure over ID 75 mm.

ELECTRICAL PROPERTIES

- Identification symbol: Ω .
Model without copper wires available upon request; identification symbol: M.

MARKING

- Embossed tape according to EN 12115:2011, lengthwise.



TECHNICAL SPECIFICATIONS

SIZE TOLERANCES: I.D.: EN 12115 - O.D.: EN 12115 - Length: ISO 1307

Inner Diameter mm	Outer diameter mm	Wall thickness mm	Working pressure BAR	Burst pressure BAR	Vacuum BAR	Min. bending radius mm	Approx. weight kg/m	Max. length m
19	31	6.0	16	64	-0.9	125	0.75	30
25	37	6.0	16	64	-0.9	150	0.94	30
32	44	6.0	16	64	-0.9	175	1.10	30
38	51	6.5	16	64	-0.9	225	1.50	30
51	67	8.0	16	64	-0.9	275	2.40	30
63.5	79.5	8.0	16	64	-0.9	300	2.95	20
76	92	8.0	16	48	-0.9	350	3.60	20

Above technical data are referring to application at room temperature (+20°C).
Other sizes and colours are available upon request. Please contact our Sales Department



Cod. IT-M00264

UPDATED: 01/24
Rev: 000