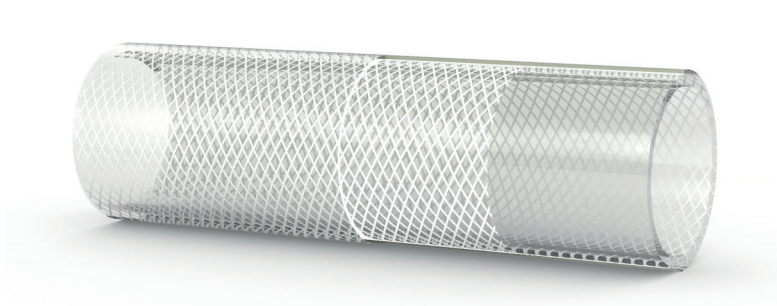




MANIFATTURA TUBI GOMMA S.p.A.
 Grisignano di Zocco, 36040 (VI) ITALY
 T. +39 0444.614755 | info@mtgspa.com
 www.mtgspa.com



APPLICATION

- Platinum-cured silicone hose, designed for conveying high-purity products.
- It is normally used in the pharmaceutical, cosmetic, biotech and food industry.
- Delivery hose, not recommended for suction.
- Hose in accordance with EC 1935/2004.
- Autoclavable.

CONSTRUCTION

TUBE

- Platinum-cured silicone rubber, pharmaceutical and food quality, light colour, odourless and tasteless, mirror smooth.

REINFORCEMENT

- Plies of synthetic cord.

COVER

- Platinum-cured silicone rubber, pharmaceutical and food quality, light colour, odourless and tasteless, mirror smooth.

STANDARDS

- Tube and cover: USP Class VI, 3A, FDA Standards, European Pharmacopoeia (E.P. 3.1.9.), BfR Recommendation XV, ISO 10993-4, -11, non-cytotoxic according to ISO 10993-Part 5, ICH Q3D, KTW-BWGL for cold and warm water.

MAIN BENEFITS

- Non-stick hose: it provides utmost safety during transport of high-purity fluids, thus removing the risk of bacterial growth on the hose surfaces.
- Perfectly smooth: it may easily be cleaned.
- Translucent, platinum-cured silicone: the see-through material is important for liquid-handling applications where the flow must be monitored.
- Non-plasticized hose.
- Made in cleanroom.

TEMPERATURE RANGE

- From -60°C to +180°C depending on the fluids conveyed.

STERILIZATION

- Sterilization with steam up to +135°C or, as an alternative, cobalt or argon radiations.

SAFETY FACTOR

- ≥ 3 times working pressure.

FITTING

- By means of clamps, collars or crimping.
- If required, we can supply special reusable fittings ensuring a regular flow and preventing turbulences inside the hose.

TECHNICAL SPECIFICATIONS

SIZE TOLERANCES: I.D.: ISO 1307 - Wall thickness: DIN 7715 T4 S2 - Length: ISO 1307

Inner Diameter mm	Outer diameter mm	Wall thickness mm	Working pressure BAR	Burst pressure BAR	Min. bending radius mm	Vacuum BAR	Approx. weight gr/m	Max. length m
3.18	9.80	-	15	45	30	-	70	25
4.72	11.35	-	15	45	35	-	106	25
6.35	13.03	-	15	45	40	-	124	25
7.93	14.61	-	12	36	45	-	147	25
9.52	16.32	-	12	36	50	-	175	25
12.70	20.10	-	10	30	65	-	237	25
15.87	24.37	-	8	24	75	-	330	25
19.05	27.91	-	8	24	80	-	415	25
22.20	31.12	-	5	15	100	-	455	25
25.40	34.50	-	5	15	120	-	513	10
31.75	40.80	-	4	12	150	-	617	10

Chemical resistance acc. to MTG Chemical Resistance Chart. Above technical data refer to application at room temperature (+20°C). Other sizes and colours are available upon request. Please contact our Sales Department.



Cod. IT-M00084

UPDATED: 05/24
 Rev: 006