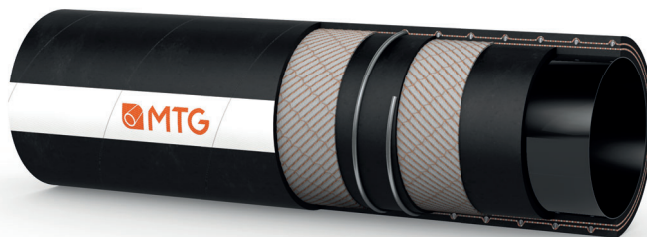




MANIFATTURA TUBI GOMMA S.p.A.

Grisignano di Zocco, 36040 (VI) ITALY
T. +39 0444.614755 | info@mtgspa.com
www.mtgspa.com



APPLICATION

- Multipurpose suction and delivery hose for conveying a wide range of aggressive chemicals.
- Engineered to ensure dissipation of electrostatic charges not only on the surface, but also through the hose wall (Electrical resistance: $R < 10^9 \Omega$).

CONSTRUCTION

TUBE

- UPE (Ultra High Molecular Weight Polyethylene), antistatic ($R < 10^6 \Omega$), black, smooth.

REINFORCEMENT

- High strength plies of synthetic cord.
- Embedded steel helix wire.
- Copper wires on request.

COVER

- EPDM rubber (code 104N), black, antistatic ($R < 10^6 \Omega$), resistant to abrasion, ozone and weather, smooth, cloth finish.

STANDARDS

- Execution in accordance with EN 12115:2021.

CERTIFICATIONS

- Hose approved by the Institute Ineris, attestation nr. INERIS-16-AM-339, for use in ATEX areas.

TEMPERATURE RANGE

- In accordance with EN 12115:2021.
- Resistant to steam up to $+130^\circ\text{C}$ for max. 30 minutes.

SAFETY FACTOR

- ≥ 4 times working pressure up to ID 75 mm.
- ≥ 3 times working pressure over ID 75 mm.

ELECTRICAL PROPERTIES

- Electrical resistance through the hose wall: $R < 10^9 \Omega$.
- Identification symbol:
 - Ω/T for version without copper wires;
 - M/T for version with copper wires.

MARKING

- Embossed tape according to EN 12115:2021, lengthwise.


MANICHEM UPE

HOSE TESTED BY INERIS
FOR USE IN ATEX ZONES

MADE IN
ITALY

TECHNICAL SPECIFICATIONS

SIZE TOLERANCES: Inner diameter: EN 12115 - Outer diameter: EN 12115 - Length: ISO 1307

Inner Diameter mm	Outer diameter mm	Wall thickness mm	Working pressure BAR	Burst pressure BAR	Vacuum BAR	Min. bending radius mm	Approx. weight kg/m	Max. length m
19	31	6.0	16	64	-0.90	125	0.60	40
25	37	6.0	16	64	-0.90	150	0.80	40
32	44	6.0	16	64	-0.90	175	1.00	40
38	51	6.5	16	64	-0.90	225	1.30	40
50	66	8.0	16	64	-0.90	275	2.00	40
51	67	8.0	16	64	-0.90	275	2.05	40
63.5	79.5	8.0	16	64	-0.90	300	2.70	40
75	91	8.0	16	64	-0.80	350	3.00	40
76	92	8.0	16	48	-0.80	350	3.05	40
100	118	9.0	16	48	-0.80	450	4.90	40
102	120	9.0	16	48	-0.80	450	5.00	40

MTG reserves the rights to implement changes in product specifications without notice and as may be deemed appropriate by the Company for any technical or commercial reason.
Chemical resistance acc. to MTG Chemical Resistance Chart. Above technical data are based on application at room temperature ($+20^\circ\text{C}$). Other sizes are available on request.

Cod. IT-M00034

UPDATED: 10/24
Rev: 004