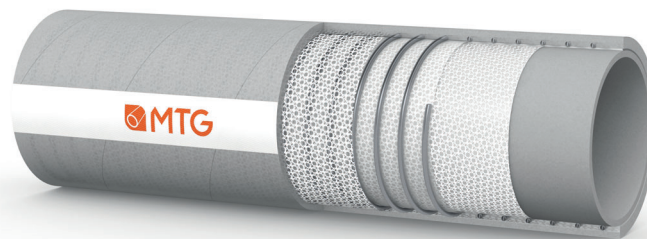



MANIFATTURA TUBI GOMMA S.p.A.

 Grisignano di Zocco, 36040 (VI) ITALY
 T. +39 0444.614755 | info@mtgspa.com
 www.mtgspa.com


APPLICATION

- Silicone hose for suction and delivery of foodstuff, cosmetic products and fluids with alcohol content up to 50%.
- Reinforced version suitable for process applications requiring a tight bending radius and a high vacuum resistance.
- Normally used in food and cosmetic industries.
- Resistant to suction.

CONSTRUCTION

TUBE

- Silicone rubber, gray (code 3362PTGR), antistatic (R<10⁸ Ohm), food quality, odourless and tasteless, smooth, glossy finish.

REINFORCEMENT

- High strength synthetic plies.
- Embedded stainless steel helix wire.

COVER

- Silicone rubber, gray (code 3362PTGR), antistatic (R<10⁸ Ohm), food quality, odourless and tasteless, smooth with glossy finish.
- It may easily be cleaned with any mild detergent.

STANDARDS

- Compliance with ATEX according to IDE certificate 208760-2739065 v01 zones 0,1,2 and 20,21,22 for cover and inner tube.
- FDA Standards, Regulation CE 1935/2004, Reg UE 10/2011 and amen.
- DM 21/03/1973 SO GU n°104 20/04/1973 and amen.
- Loi n° 2010-729 du 30 juin 2010 modifiée par la loi n°2012-1442 du 24 décembre 2012.
- Arrêté du 25 novembre 1992 relatif aux matériaux et objets en élastomères de silicone.
- Bundesinstitut für Risikobewertung XV Sez. III.
- Code of Federal Regulations Title 21 Part 177 Sec. 177.2600 Rubber articles.

MAIN BENEFITS

- Hose suitable for use in ATEX zones 1/21 and 2/22.
- Platinum-cured silicone hose.
- From raw material to packaged product, the hose is manufactured in a cleanroom class 8, certified in operation according to the ISO 14644-1 standard. MTG guarantees full traceability of the production process.
- Hose in accordance with EC 1935/2004 and 2023/2006/EC (GMP).
- The MTG production cycle is free from animal derived ingredients, phthalates, adipates, nitrosamines, and materials subject to restrictions acc. to EC 1907/2006 (REACH).
- Non-plasticized hose.

TEMPERATURE RANGE

- From -60°C to +200°C.

STERILIZATION

- Sterilization with steam up to +135°C at 3.5 bar for max. 90 minutes.
- Sterilization with hot air up to +200°C for max. 30 minutes.
- Sterilizations repeated at intervals of less than 1 hour may seriously affect the mechanical features of the hose.

SAFETY FACTOR

- ≥ 3 times working pressure.

MARKING

- On demand.

TECHNICAL SPECIFICATIONS

SIZE TOLERANCES: I.D.: ISO 1307 - Wall thickness: +1/-0.5mm - Length: ISO 1307

Inner Diameter mm	Outer diameter mm	Wall thickness mm	Working pressure* BAR	Burst pressure BAR	Min. bending radius mm	Vacuum BAR	Approx. weight kg/m	Max. length m
10	22	6.0	10	30	50	-0.9	0.38	30
13	25	6.0	10	30	52	-0.9	0.45	30
16	29	6.5	10	30	60	-0.9	0.53	30
19	32	6.5	10	30	66	-0.9	0.62	30
25	38	6.5	10	30	86	-0.9	0.75	30
32	45	6.5	10	30	110	-0.9	0.92	30
38	52	7.0	10	30	130	-0.9	1.25	30
50	64	7.0	10	30	200	-0.9	1.62	30
63.5	77.5	7.0	8	24	250	-0.9	2.22	20
76	90	7.0	8	24	350	-0.9	2.95	20
100	114	7.0	7	21	500	-0.9	3.62	20

(*) At a temperature of +100°C the W.P. decreases by 20%.

Chemical resistance acc. to MTG Chemical Resistance Chart. Above technical data refer to application at room temperature (+20°C). Other sizes are available on demand. Please contact our Sales Department. MTG reserves the rights to implement changes in product specifications without notice and as may be deemed appropriate by the Company for any technical or commercial reason.



Cod. IT-C00404

 DATED: 04/25
 Rev: 001