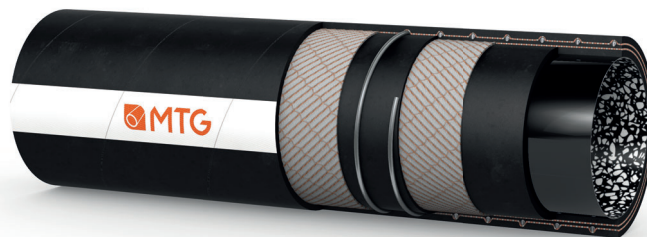


MANIFATTURA TUBI GOMMA S.p.A.

Grisignano di Zocco, 36040 (VI) ITALY
T. +39 0444.614755 | info@mtgspa.com
www.mtgspa.com



APPLICATION

- Multipurpose suction and delivery hose for conveying a wide range of chemicals.
- Specifically developed to ensure dissipation of electrostatic charges not only on the surface, but also through the hose wall: electrical resistance through the hose wall: $R < 10^9$ Ohm.

CONSTRUCTION

TUBE

- UPE (Ultra High Molecular Weight Polyethylene), marble finish, patented, antistatic ($R < 10^6 \Omega$), black and white, smooth.
- Compliance: FDA Standards, D.M. 21/03/73 and following amendments, Regulation EU n. 10/2011.

REINFORCEMENT

- High strength plies of synthetic cord.
- Embedded steel helix wire.
- Copper wires on request.

COVER

- EPDM rubber, black colour, antistatic ($R < 10^6 \Omega$), smooth, resistant to abrasion, ozone and weather, cloth finish.

STANDARDS

- Execution complying with EN 12115: 2021 and EN 50014/IEC 60079-0.

ELECTRICAL PROPERTIES

- Identification symbol:
 - Ω/T for version without copper wires;
 - M/T for version with copper wires.

MAIN BENEFITS

- The marble finish with a low coefficient of friction facilitates transport of the product conveyed; also it allows a good resistance of the inner surface to contact with chemicals. It may easily be washed with the usual cleaning processes.

TEMPERATURE RANGE

- In accordance with EN 12115:2021.
- Resistance to steam up to +130°C for max. 30 minutes.

SAFETY FACTOR

- ≥ 4 times working pressure up to ID 76 mm.
- ≥ 3 times working pressure over ID 76 mm.

PATENTS

- E.P. 1580475.
- US P. 7,389,799.

MARKING

- Embossed tape according to EN 12115:2021, lengthwise.

MTG MANICHEM UPE - MARBLE HOSE TESTED BY INERIS FOR USE IN ATEX ZONES E.PATENT 1580475 U.S.PATENT 7,389,799 MADE IN ITALY

MTG EN 12115:2021 - SD - DN - 16bar -20°C to +65°C - Ω/T - QUARTER/YEAR

CERTIFICATIONS

- Hose approved by the Institute Ineris for use in ATEX areas, attestation nr. INERIS-DRA-20-200870-02408A available up to DN 3".

TECHNICAL SPECIFICATIONS

SIZE TOLERANCES: I.D.: EN 12115 - O.D.: EN 12115 - Length: ISO 1307

Inner Diameter mm	Outer diameter mm	Wall thickness mm	Working pressure BAR	Burst pressure BAR	Vacuum BAR	Min. bending radius mm	Approx. weight kg/m	Max. length m
19	31	6.0	16	64	-0.9	125	0.65	40
25	37	6.0	16	64	-0.9	150	0.80	40
32	44	6.0	16	64	-0.9	175	1.00	40
38	51	6.5	16	64	-0.9	225	1.30	40
50	66	8.0	16	64	-0.9	275	2.15	40
51	67	8.0	16	64	-0.9	275	2.20	40
63.5	79.5	8.0	16	64	-0.9	300	2.60	40
75	91	8.0	16	64	-0.8	350	3.15	40
76	92	8.0	16	48	-0.8	350	3.20	40
100	116	8.0	16	48	-0.8	450	4.90	40

Chemical resistance acc. to MTG Chemical Resistance Chart. Above technical data refer to application at room temperature (+20°C). Other sizes and colours are available upon request. Please contact our Sales Department. MTG reserves the rights to implement changes in product specifications without notice and as may be deemed appropriate by the Company for any technical or commercial reason. The selection of fittings for our hoses should be made in accordance with the recommendations provided in ISO 8331: "Rubber and plastics hoses and hose assemblies - Guidelines for selection, storage, use and maintenance."



Cod. IT-M00083

UPDATED: 03/26
Rev: 007