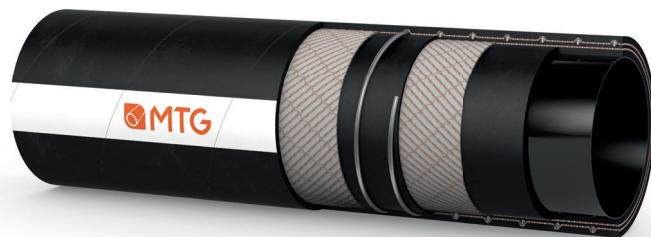


**MANIFATTURA TUBI GOMMA S.p.A.**

Grisignano di Zocco, 36040 (VI) ITALY  
T. +39 0444.614755 | info@mtgspa.com  
www.mtgspa.com



## APPLICATION

- Multipurpose suction and delivery hose for conveying a wide range of aggressive chemicals.
- Engineered to ensure dissipation of electrostatic charges not only on the surface, but also through the hose wall (Electrical resistance:  $R < 10^9 \Omega$ ).

## CONSTRUCTION

### TUBE

- UPE (Ultra High Molecular Weight Polyethylene), antistatic ( $R < 10^6 \Omega$ ), black, smooth.

### REINFORCEMENT

- High strength plies of synthetic cord.
- Embedded steel helix wire.
- Copper wires on request.

### COVER

- EPDM rubber (code 104N), black, antistatic ( $R < 10^6 \Omega$ ), resistant to abrasion, ozone and weather, smooth, cloth finish.

## STANDARDS

- Execution in accordance with EN 12115:2021.

## CERTIFICATIONS

- Hose approved by the Institute Ineris, attestation nr. INERIS-16-AM-339, for use in Atex areas.

## TEMPERATURE RANGE

- In accordance with EN 12115:2021.
- Resistant to steam up to +130°C for max. 30 minutes.

## SAFETY FACTOR

- $\geq 4$  times working pressure up to ID 75 mm.
- $\geq 3$  times working pressure over ID 75 mm.

## ELECTRICAL PROPERTIES

- Electrical resistance through the hose wall:  $R < 10^9 \Omega$ .
- Identification symbol:
  - $\Omega/T$  for version without copper wires;
  - $M/T$  for version with copper wires.

## MARKING

- Embossed tape according to EN 12115:2021, lengthwise.



# TECHNICAL SPECIFICATIONS

SIZE TOLERANCES: Inner diameter: EN 12115 - Outer diameter: EN 12115 - Length: ISO 1307

Inner Diameter mm	Outer diameter mm	Wall thickness mm	Working pressure BAR	Burst pressure BAR	Vacuum BAR	Min. bending radius mm	Approx. weight kg/m	Max. length m
19	31	6.0	16	64	-0.90	125	0.60	40
25	37	6.0	16	64	-0.90	150	0.80	40
32	44	6.0	16	64	-0.90	175	1.00	40
38	51	6.5	16	64	-0.90	225	1.30	40
50	66	8.0	16	64	-0.90	275	2.00	40
51	67	8.0	16	64	-0.90	275	2.05	40
63.5	79.5	8.0	16	64	-0.90	300	2.70	40
75	91	8.0	16	64	-0.80	350	3.00	40
76	92	8.0	16	48	-0.80	350	3.05	40
100	116	8.0	16	48	-0.80	450	4.90	40

Chemical resistance acc. to MTG Chemical Resistance Chart. Above technical data refer to application at room temperature (+20°C). Other sizes and colours are available upon request. Please contact our Sales Department. MTG reserves the rights to implement changes in product specifications without notice and as may be deemed appropriate by the Company for any technical or commercial reason. The selection of fittings for our hoses should be made in accordance with the recommendations provided in ISO 8331: "Rubber and plastics hoses and hose assemblies - Guidelines for selection, storage, use and maintenance."