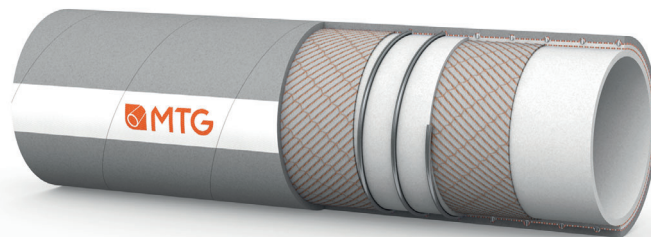


MANIFATTURA TUBI GOMMA S.p.A.

Grisignano di Zocco, 36040 (VI) ITALY
T. +39 0444.614755 | info@mtgspa.com
www.mtgspa.com



APPLICATION

- Universal flexible rubber hose specifically designed for application in the oil and wine sector for transferring fatty and non-fatty liquids such as edible oil, wine, cider, grape must, fruit juices and distillates with an alcoholic content up to 50%.
- Normally used for light-duty application in olive oil mills, wineries or in similar food manufacturing environments and as connection between tank trucks and tanks.

CONSTRUCTION

TUBE

- Synthetic rubber (Cod. 90TR), clear colour, odourless, smooth.
- Complies with FDA Standard and with D.M. 21/03/73 and following amendments.

REINFORCEMENT

- Synthetic textile plies.
- Embedded steel wire helix.

COVER

- Synthetic polymer, grey colour, abrasion and weather resistant, smooth, cloth finish.
- Other colours available upon request.

NOTE

- Available on request, version with 10 bar operating pressure for all diameters.

MAIN BENEFITS

- Totally free from phthalates and animal derivatives.
- Good flexibility also at low temperature.
- High resistance against chemical cleaning products.
- The absence of plasticizers in the tube reduces the risk of bacteria proliferation and prevents any hazards of cross-contamination of media conveyed especially in case of contact with fatty products.
- Hose in accordance with EC 1935/2004 and 2023/2006/EC (GMP). The MTG production cycle is free from animal derived ingredients, phthalates, adipates and materials subject to restrictions acc. to EC 1907/2006 (REACH).

TEMPERATURE RANGE

- From -30°C to +80°C.
- Sterilization up to +120°C for max. 30 minutes.

SAFETY FACTOR

- ≥ 3 times working pressure.

MARKING



TECHNICAL SPECIFICATIONS

SIZE TOLERANCES: I.D.: ISO 1307 - Wall thickness: DIN 7715 T4 S2 - Length: ISO 1307

Inner Diameter mm	Outer diameter mm	Wall thickness mm	Working pressure BAR	Burst pressure BAR	Vacuum BAR	Min. bending radius mm	Approx. weight kg/m	Max. length m
13	22	4.5	20	60	-0.9	50	0.35	40
19	29	5.0	18	54	-0.9	70	0.58	40
25	35	5.0	15	45	-0.9	90	0.69	40
30	40	5.0	12	36	-0.9	120	0.80	40
32	42	5.0	12	36	-0.9	135	0.83	40
35	45	5.0	10	30	-0.9	150	0.89	40
38	48.5	5.3	10	30	-0.9	170	1.12	40
40	50.5	5.3	10	30	-0.9	180	1.17	40
45	55.5	5.3	8	24	-0.9	200	1.30	40
51	61.5	5.3	8	24	-0.9	225	1.48	40
53	64	5.5	8	24	-0.9	250	1.58	40
60	71	5.5	7	21	-0.9	280	1.85	40
70	82	6.0	7	21	-0.9	340	2.35	40
80	92	6.0	6	18	-0.9	390	2.80	40
90	103	6.5	5	15	-0.9	500	3.40	40
100	113	6.5	5	15	-0.9	600	3.80	40
120	136	8.0	4	12	-0.9	720	5.50	40
125	141	8.0	4	12	-0.9	750	5.80	40

Other sizes and colours are available upon request. Please contact our Sales Department. Above technical data refer to application at room temperature (+20°C).

MTG reserves the rights to implement changes in product specifications without notice and as may be deemed appropriate by the Company for any technical or commercial reason. The selection of fittings for our hoses should be made in accordance with the recommendations provided in ISO 8331: "Rubber and plastics hoses and hose assemblies - Guidelines for selection, storage, use and maintenance."



Cod. IT-L00014

UPDATED: 04/26
Rev: 002