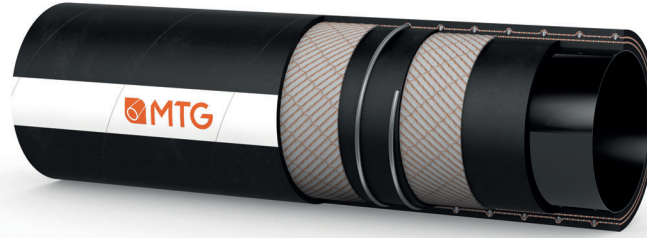


MANIFATTURA TUBI GOMMA S.p.A.

 Grisignano di Zocco, 36040 (VI) ITALY
 T. +39 0444.614755 | info@mtgspa.com
 www.mtgspa.com


APPLICATION

- Flexible multipurpose hose "Full Ohm", approved by the Institute Ineris for use in Atex areas, attestation nr. INERIS-DRA-20-200870-02408A.
- Perfect technical solution for handling cosmetic, pharmaceutical and highly flammable chemical products.
- Execution complying with EN 12115: 2021.
- Engineered to ensure dissipation of electrostatic charges not only on the surfaces (tube and cover $R < 10^6 \Omega$) but also through the hose wall ($R < 10^9 \Omega$).

CONSTRUCTION

TUBE

- PFA (Perfluoroalkoxy), fully fluorinated, mirror-smooth, black colour, antistatic ($R < 10^6 \Omega$), patented.
- Compliance: USP Class VI, FDA Standards, Regulation EU n. 10/2011, ISO 10993-4, -10, -11, non-cytotoxic according to ISO 10993-Part 5.

REINFORCEMENT

- High strength plies of synthetic cord.
- Embedded steel helix wire.
- Copper wires on request.

COVER

- Synthetic rubber, black colour, resistant to abrasion and ageing, antistatic ($R < 10^6 \Omega$), smooth, cloth finish.

PATENTS

- E.P. 1450092.

SAFETY FACTOR

- ≥ 4 times working pressure.

MAIN BENEFITS

- The fluorinated inner liner ensures utmost chemical and temperature resistance, excellent impermeability and contamination-free transport of the fluid conveyed.
- Hose in accordance with EC 1935/2004 and 2023/2006/EC (GMP).
- The MTG production cycle is free from animal derived ingredients, phthalates, adipates and materials subject to restrictions according to EC 1907/2006 (REACH).
- Non-plasticized inner tube.

TEMPERATURE RANGE AND STERILIZATION

- Temperature Range: In accordance with EN 12115: 2021.
- Steam disinfection, in an open circuit, with peaks up to +164°C for max. 20 minutes.

ELECTRICAL PROPERTIES

- Electrical resistance through the hose wall: $R < 10^9 \Omega$.
- Identification symbol:
 - Ω/T for version without copper wires;
 - M/T for version with copper wires.

NOTE

- Please check recommendations and instructions mentioned in the MTG "use and maintenance guideline for PFA/MFA hoses".
- Not autoclavable.

MARKING

- Embossed tape according to EN 12115: 2021, lengthwise.



TECHNICAL SPECIFICATIONS

SIZE TOLERANCES: I.D.: EN 12115:2021 - Wall thickness: EN 12115:2021 - Length: ISO 1307

| Inner Diameter mm | Outer diameter mm | Wall thickness mm | Working pressure BAR | Burst pressure BAR | Vacuum BAR | Min. bending radius (Static) mm | Min. bending radius (Dynamic) * mm | Approx. weight kg/m | Max. length m |
|-------------------|-------------------|-------------------|----------------------|--------------------|------------|---------------------------------|------------------------------------|---------------------|---------------|
| 19 | 31 | 6.0 | 10 | 40 | -0.9 | 188 | - | 0.67 | 30 |
| 25 | 37 | 6.0 | 10 | 40 | -0.9 | 225 | - | 0.88 | 30 |
| 32 | 45 | 6.5 | 10 | 40 | -0.9 | 262 | - | 1.16 | 30 |
| 38 | 51 | 6.5 | 10 | 40 | -0.9 | 338 | - | 1.43 | 30 |
| 51 | 65.5 | 7.25 | 10 | 40 | -0.9 | 412 | - | 1.95 | 30 |
| 63.5 | 79.5 | 8.0 | 10 | 40 | -0.9 | 450 | - | 2.75 | 20 |
| 76 | 92 | 8.0 | 10 | 40 | -0.9 | 525 | - | 3.20 | 20 |
| 100 | 117 | 8.5 | 10 | 40 | -0.9 | 700 | - | 4.60 | 20 |

(*): In case of dynamic application please contact our Technical Dept.

Above technical data are referring to application at room temperature (+20°C). Other sizes and colours are available upon request. Please contact our Sales Department. MTG reserves the rights to implement changes in product specifications without notice and as may be deemed appropriate by the Company for any technical or commercial reason. The selection of fittings for our hoses should be made in accordance with the recommendations provided in ISO 8331: "Rubber and plastics hoses and hose assemblies - Guidelines for selection, storage, use and maintenance."



Cod. IT-M00128

 UPDATED: 06/26
 Rev: 009